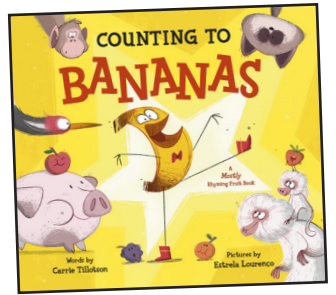


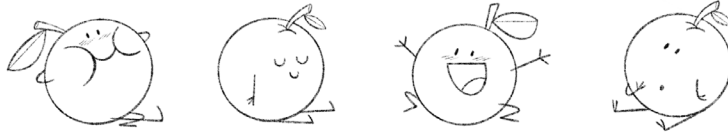
Can you count all the different **FRUITS** and **ANIMALS**?



Pigs



Oranges



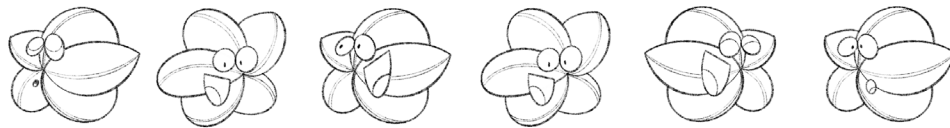
Lemons



Bears



Star Fruit



Apricots



Leeches



Figs

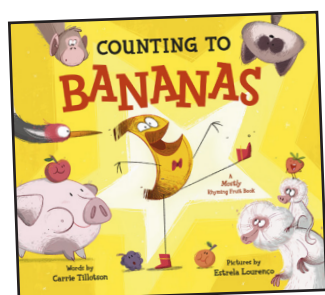
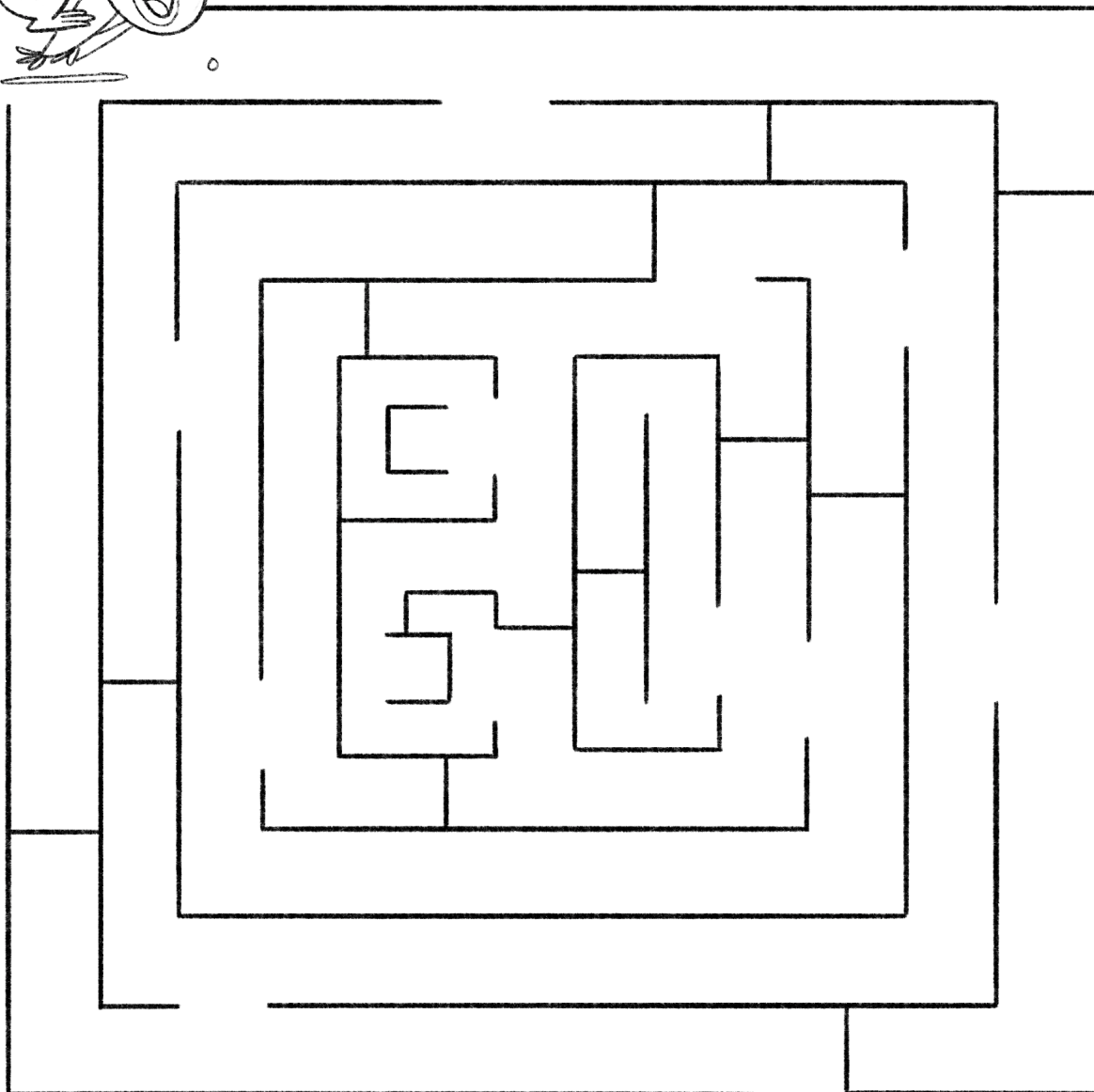


Apes



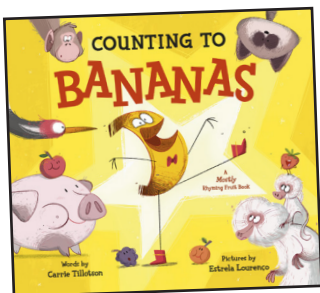
Cherries





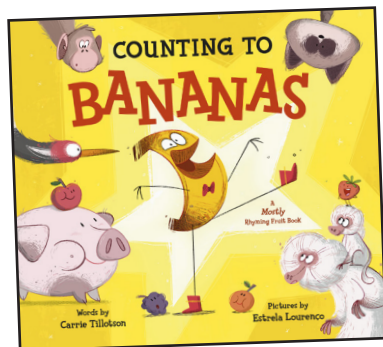
**Help Banana escape
from the apes!**



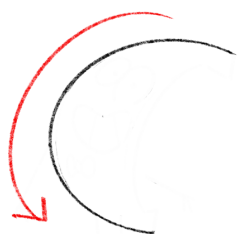


**Color your own banana! Most bananas are yellow,
but they don't have to be!
What color do you want Banana to be?**

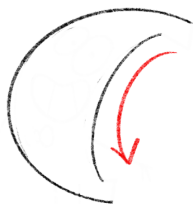




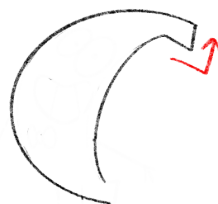
HOW TO DRAW A BANANA



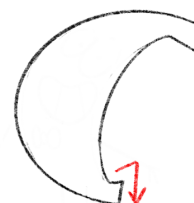
1. Draw a big arc



2. Now, a smaller arc



3. Let's connect the 2 arcs for Banana's head



4. And now Banana's butt!



5. Banana has two silly round eyes with two dots inside



6. And a BIG SMILE with BIG teeth



7. Two sticks for the arms



8. And three smaller sticks for each of Banana's hands!



9. Let's give Banana two stick for legs



10. And little pointy boots!

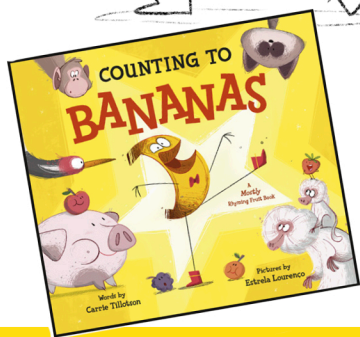
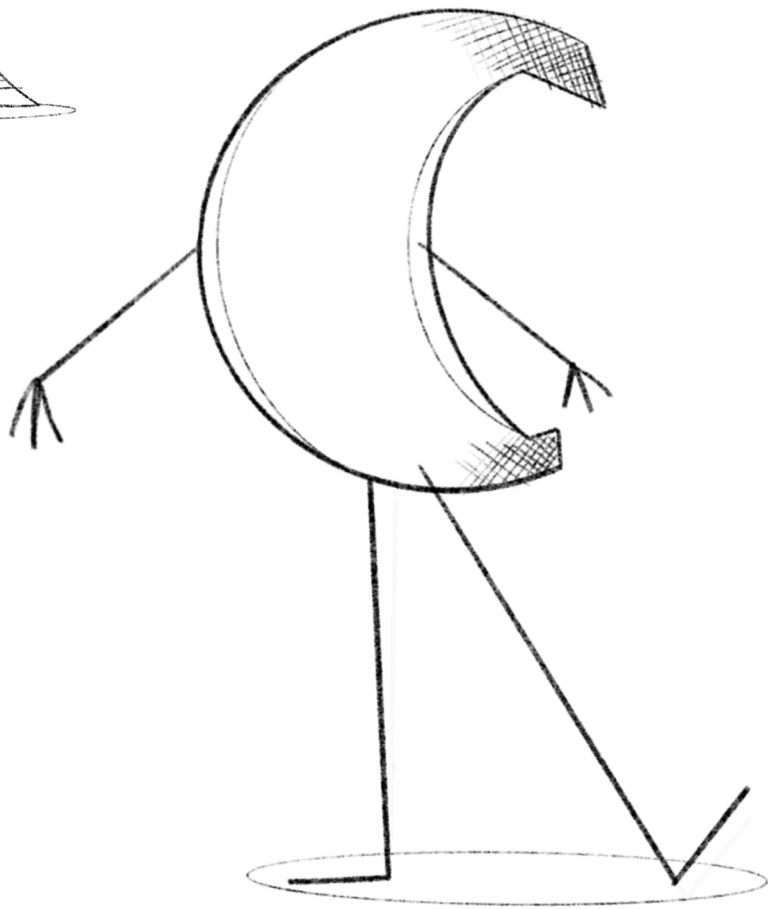
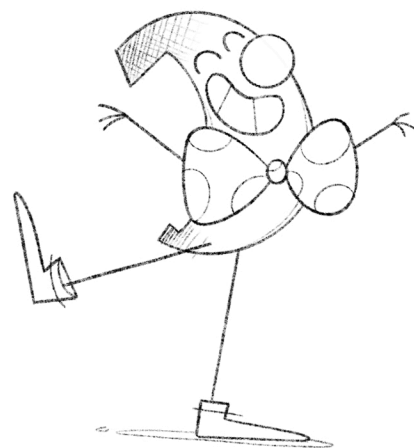


11. Banana's boots have a stripe



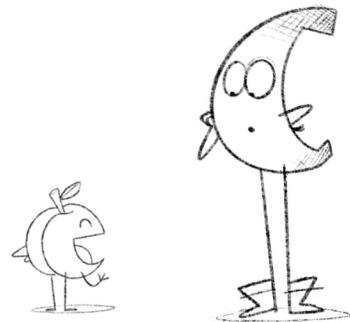
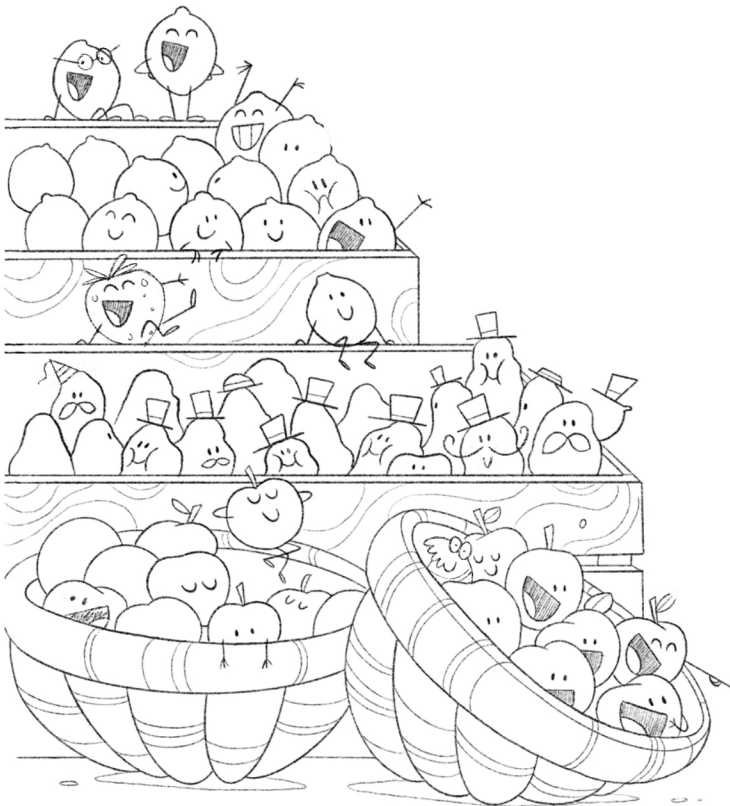
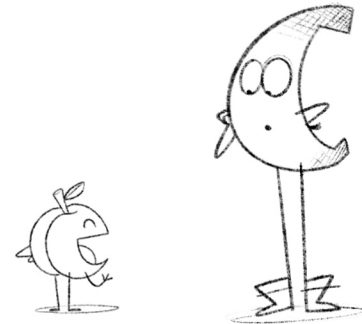
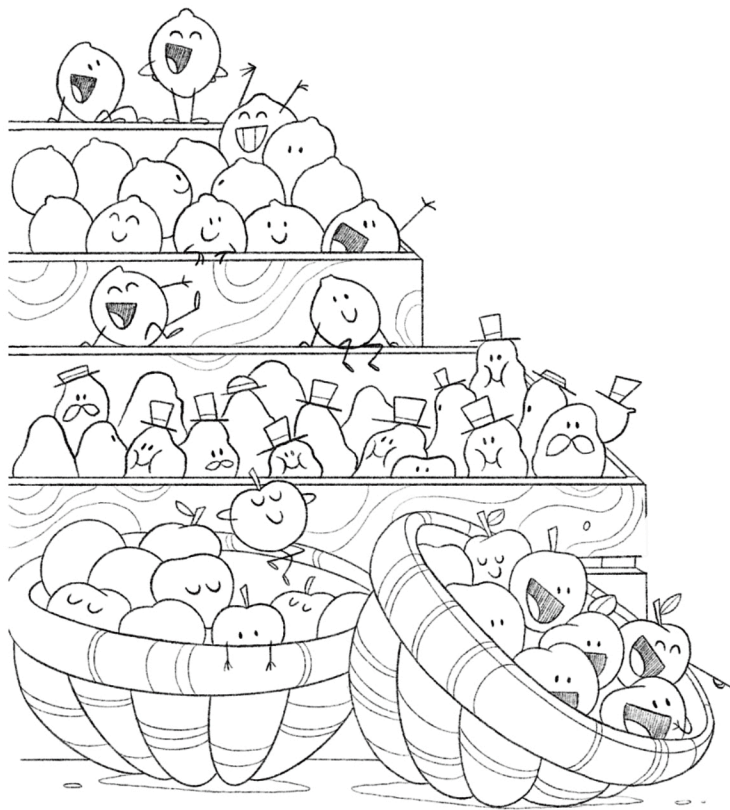
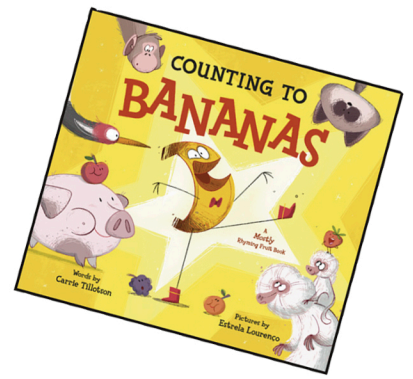
12. Annnnd for a final touch... Banana's bow!





**Banana LOVES dressing up.
What outfit do you think they
should wear today?**





**Spot the 7 differences between these
two images before Banana does!**

